

Disassembling the **XBox**

Disassembling the XBox



Disassembly of your XBox may cause damage to your console if not conducted correctly. Please ensure that power is not applied to your XBox during this procedure.



Disassembling the XBox.

To disassemble your XBox console you must first remove the cover, you will need a Torx 20 screwdriver to do this and the image below indicates the location of six torx screws that must be removed.



You will need to lift the consoles feet up as displayed in the picture below to access four of the torx screws. The green circles above indicate the location of two torx screws that are hidden under stickers, remember that breaking these stickers will void your warranty but it is the only way that you can install the Xenium.



Firmly remove the console's cover and you will reveal the contents of the Xbox!



Now remove the IDE cable (marked in orange) and the power cable (blue) from the hard disk drive.
A torx 10 screw as indicated in green needs to be removed to allow the hard disk to be removed from the console.



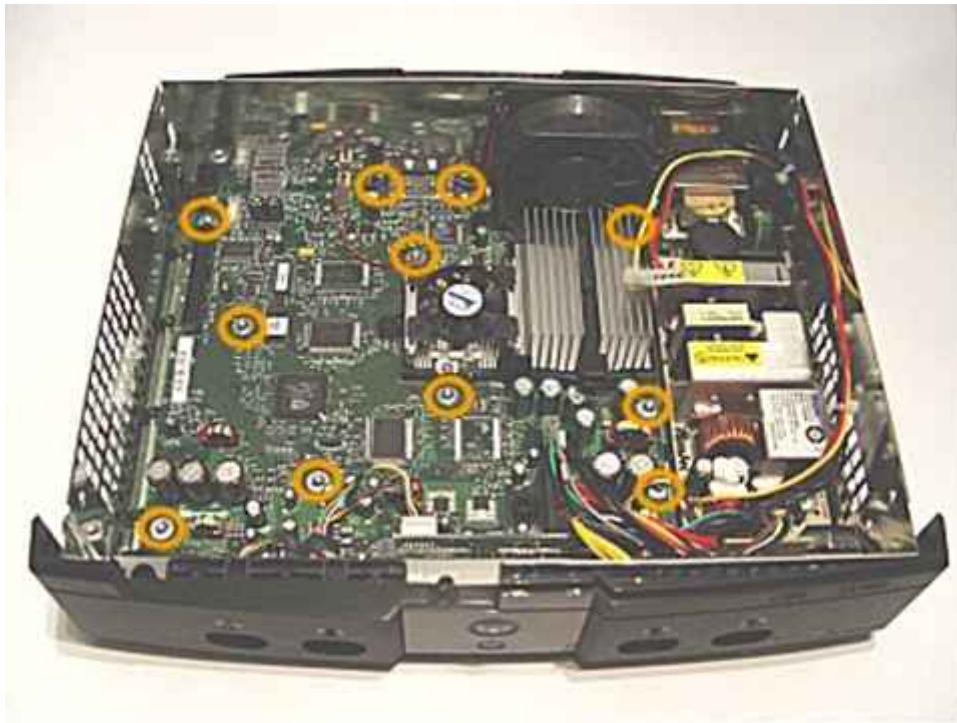
With the hard disk removed you must now remove two torx 10 screws as indicated by the yellow circles.



Remove the IDE and power cables from the DVD-Rom drive as indicated by the red and blue circles. You can then remove the DVD-Rom unit and the IDE & Power cables.



You can now clearly see the Xbox's motherboard, to remove the motherboard you need to unscrew the eleven torx 10 screws as indicated by the orange circles. The fan on the GPU heatsink indicates a version 1.0 motherboard.



Once the screws have been removed you will need to remove the power supply connector and controller ports from the motherboard. In a version 1.0 motherboard the controller ports are connected to a daughter board that needs to be removed. The picture below shows a version 1.1+ motherboard.

